

WHEN ONE OR TWO BUMPERS DON'T FIT

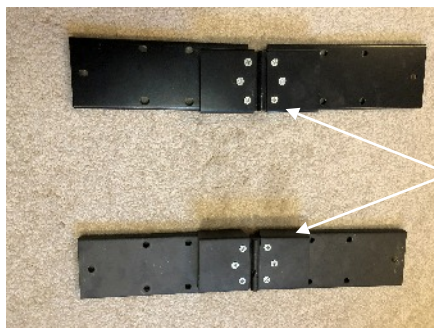
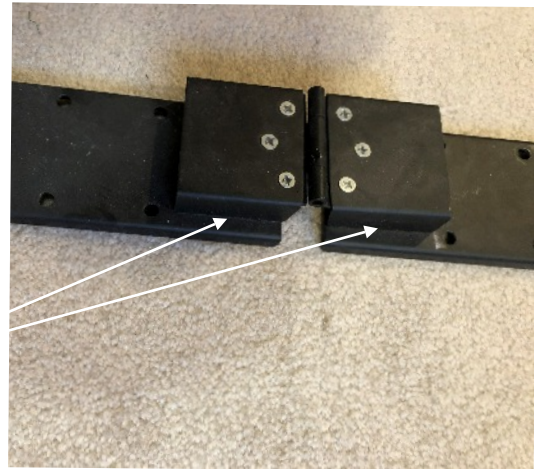


When one or two Bumpers DO NOT Fit

If the table is correctly assembled, all the bumpers should fit nicely down to the table surface. If they do not, it is caused by one or more table hinge assemblies being mounted incorrectly. Each of the hinge assemblies are made with the top portion offset from the body of the hinge by about one-half inch. This offset is to provide an adequate space for the extension on the bottom of the bumper. The hinges should be mounted with the offsets located facing each other to provide this adequate space.

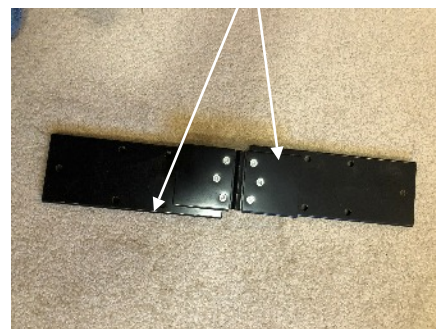
To correct this problem, just unbolt the offending hinge(s), rotate them to provide the proper offset, then remount them to your table. This is done most easily by opening the table but don't put on the bumpers. Locate the offending hinge(s) and unbolt from the table, rotate it 180 degrees, and re-attach. Do this for all hinges as needed, one at a time. This photo shows the correct orientation for the pair of hinges on a table.

NOTE: OFFSET



NOTE OFFSETS

OFFSETS



If you have a hinge with opposed offsets as in the photo to the right, call Poly Pong to get a placement.

NOTE: If the bumpers do not fit down tight on the table, check the hinges.

