

ASSEMBLY MANUAL



CRUISE SHIP ALL-WEATHER

UNPACKING INSTRUCTIONS

You should have received two cartons. The main shipping pallet is 53 inches by 52 inches and 48 inches tall. Also, you should have an eight inch diameter cylinder that is 84 inches long. Inspect your shipping containers and look for any physical damage. If you find any, photograph it and report it to the shipping company. Remove the top and sides of your pallet. Look for any internal damage. Report this if you find any.

Unpack all of the contents of the pallet and cylinder. You should find the parts as shown in Figure 1. Make sure that you can identify all of the components. Save the packing boxes.

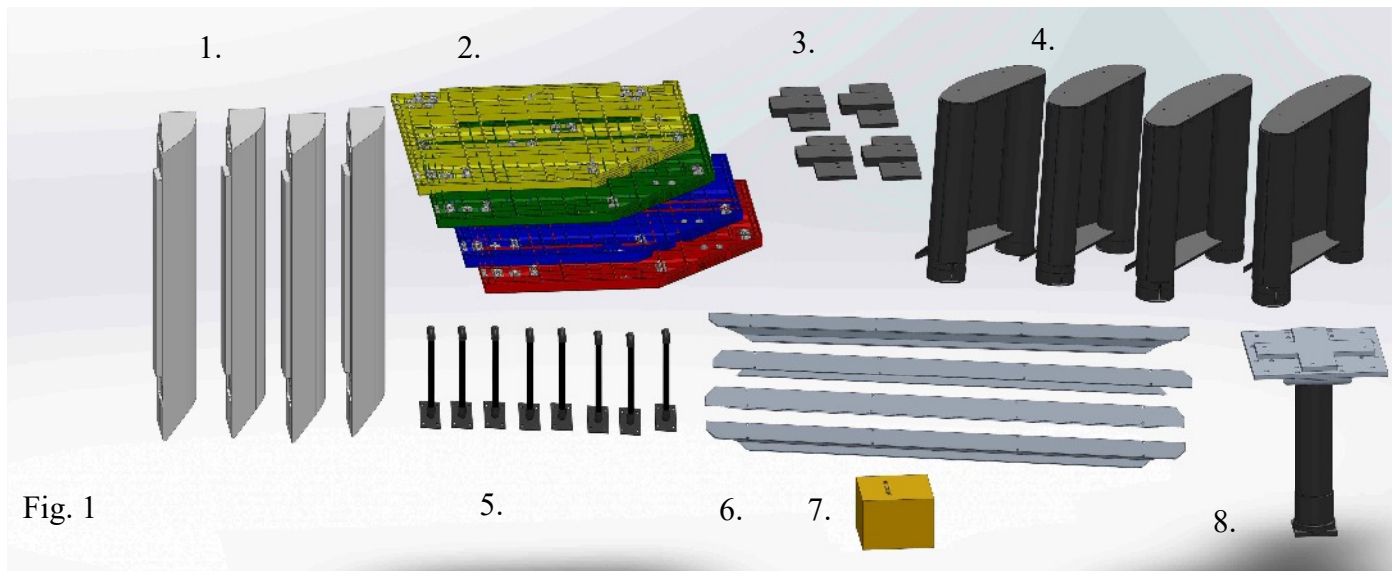


Fig. 1

- | | |
|------------------|-------------------------------------|
| 1. Bumpers | 5. Pipe braces |
| 2. Table tops | 6. I beams |
| 3. Table joiners | 7. Box of accessories,
fasteners |
| 4. Legs | 8. Center post |

ASSEMBLY

Carefully lay out The four Styrofoam sheets that the table tops were packed in in the form of a 2 by 2 square with the pieces spaced about four inches apart. These provide a clean surface to protect the table tops during assembly. If these were damaged, you can use the cardboard boxes instead. Be sure to remove all metal staples. Now carefully place the four table tops upside down on the Styrofoam sheets and in the colors shown in Fig. 2.

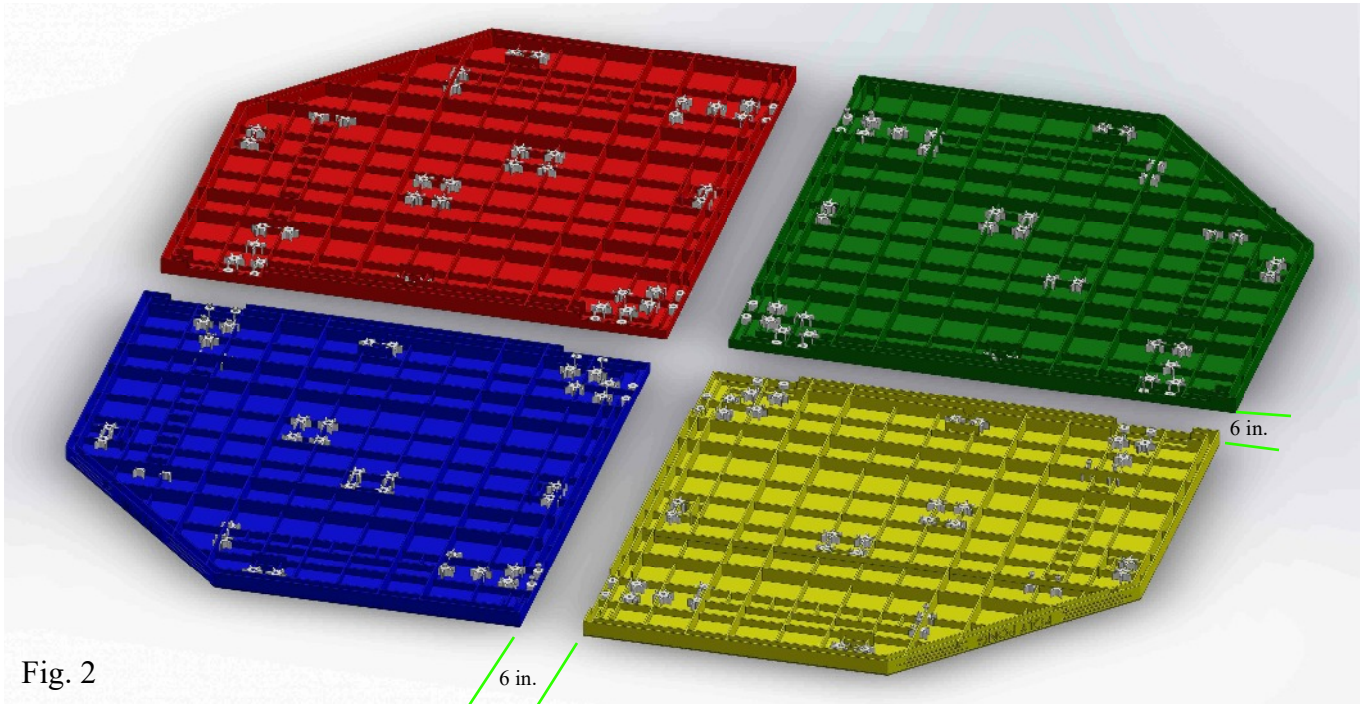


Fig. 2

Locate one of the table joiners and insert it as shown in Fig. 3. Push the two table tops together so that they touch the sides of the table joiner. Fasten the joiner to the table tops using four 8 mm x 30 mm screws and large washers shown also in Fig. 3. **LEAVE THESE SCREWS SLIGHTLY LOOSE.** Repeat with the remaining Table joiners so that all four table tops are connected, Fig. 4. All the screws are still loose.

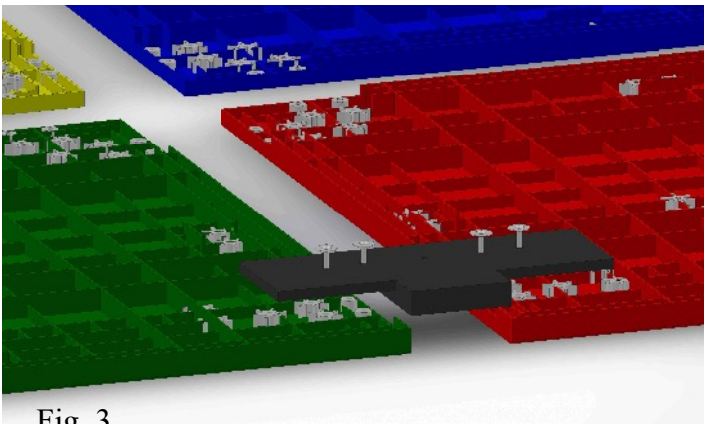


Fig. 3

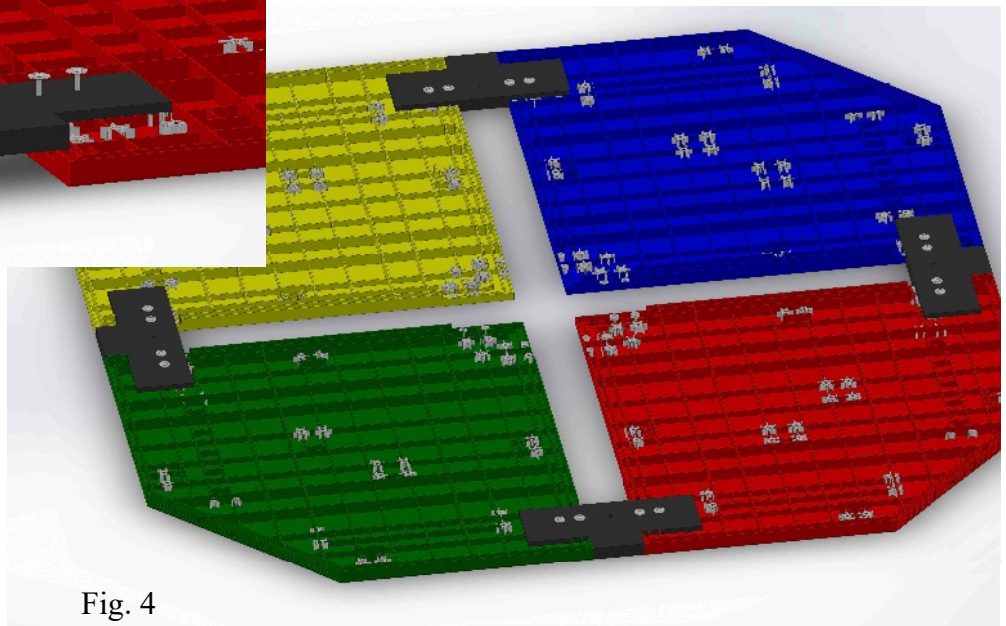


Fig. 4

Now locate the center post. This will be placed in the center of the four tables with the large end down. It should fit snugly between the table tops. Fig. 5.

Four 8 mm x 30 mm screws with large washers should be screwed into the molded nuts that are in the corners of each of the four table tops. THESE SHOULD BE ONLY TIGHTENED LOOSELY. Fig. 6.

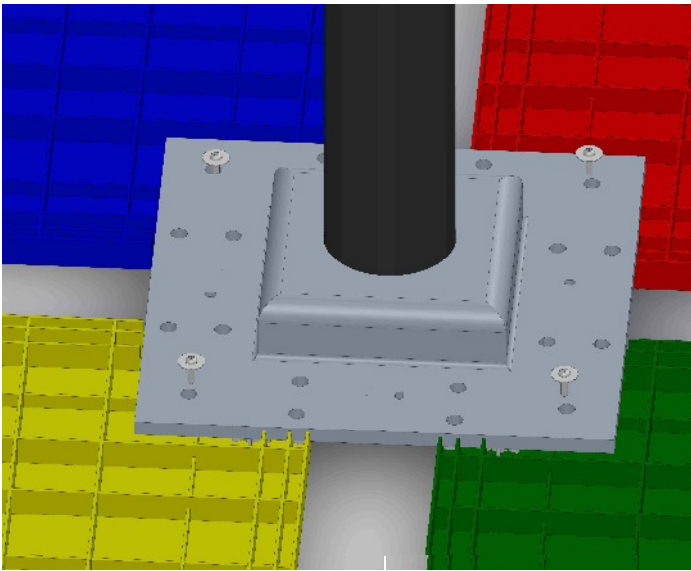


Fig. 6

You may now tighten all loose screws in the table joiners and the four screws in the center post. Now add sixteen more 8 mm x 30 mm screws and large washers to the remaining holes in the center post, using four per table top. Cinch these screws up tightly. Your assembly should now look like Fig. 7.

NOTE: Use both large and small washers as shown in this picture for the 20 bolts in this page.

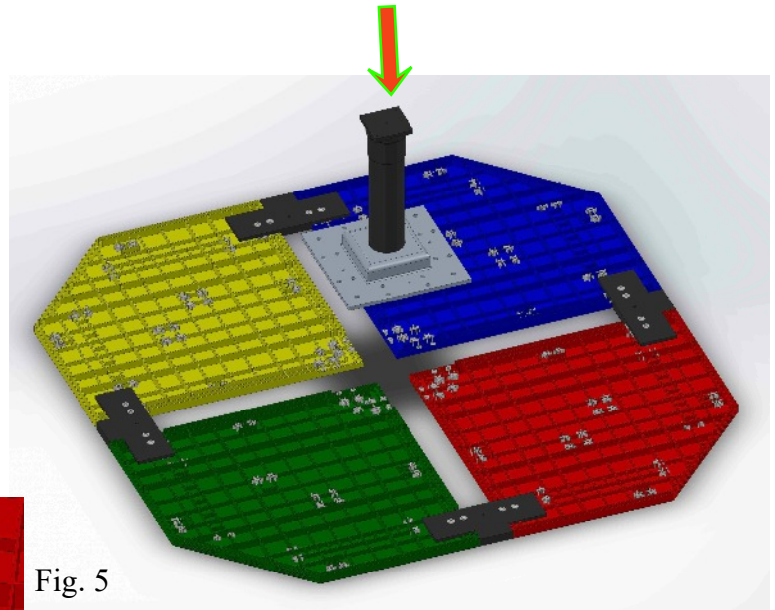
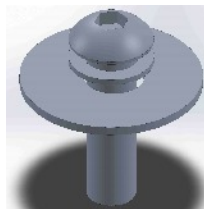


Fig. 5

NOW CHECK AGAIN TO MAKE SURE THAT THE DISTANCE BETWEEN EACH TABLE TOP AND ITS ADJOINING TWO TABLE TOPS IS EXACTLY 6 INCHES.

ALSO SIGHT ALONG THE OUTER EDGES OF THE FOUR TABLE TOPS AND INSURE THAT THEY ARE IN PERFECT ALIGNMENT.

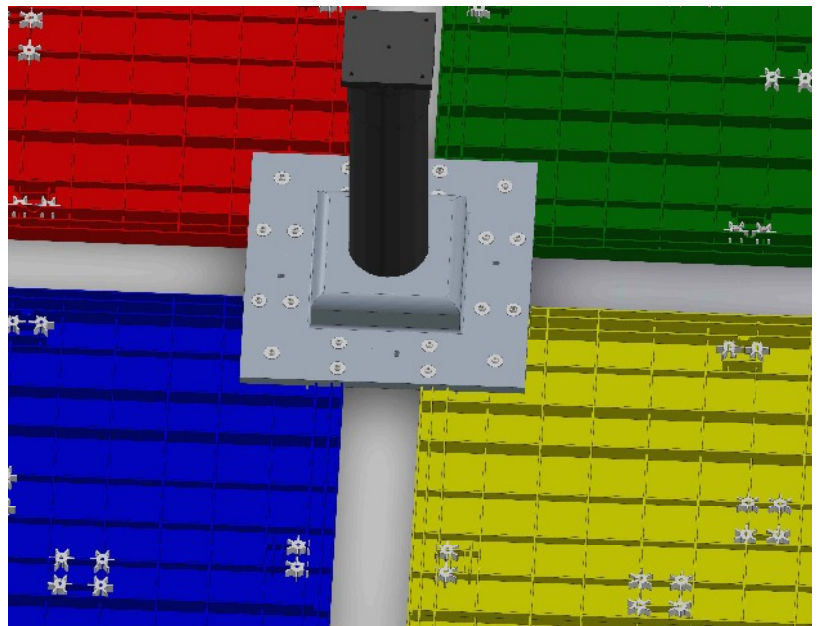


Fig. 7

BEAM AND LEG ASSEMBLY

Locate one I beam and one leg assembly and position the beam so that the longest side is down and that the beveled end tapers toward you. Carefully, slide the beam into the "I" slot on the end of the leg assembly. Fig. 8.

It should pass through the leg cylinder and protrude out the back side. Keep advancing it through until it makes contact with the beam cover. Fig. 9. You may need to use a soft mallet or a hammer against a board to help move the beams into the legs.

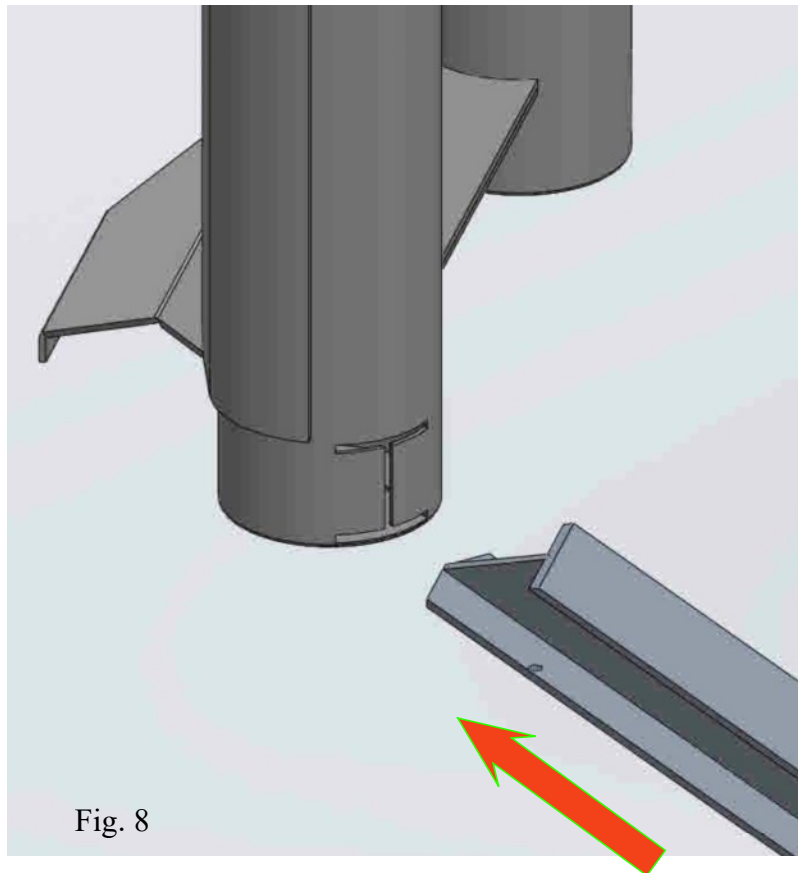


Fig. 8



Fig. 9

Bring a second leg assembly into position shown Fig. 10.

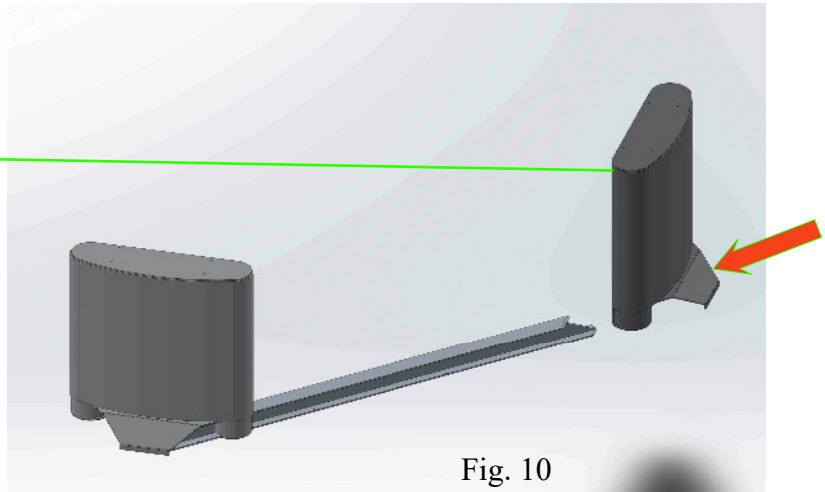


Fig. 10

Carefully slide this leg onto the “I” beam as you did before. It should protrude through the leg assembly and be advanced until it touches the beam cover. Fig. 11.

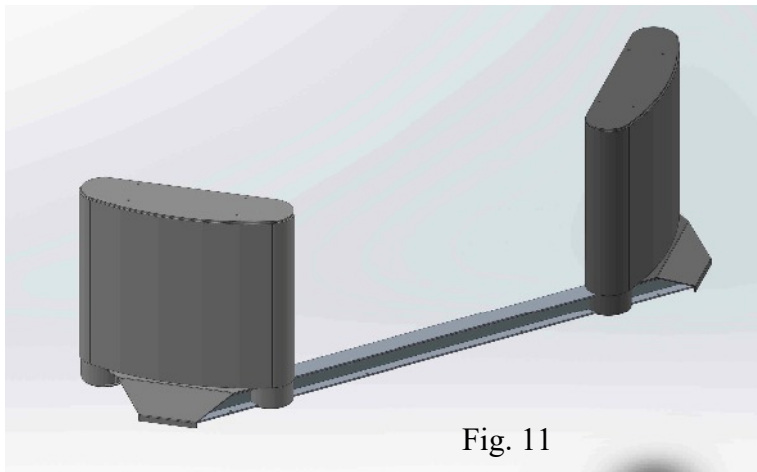


Fig. 11

This beam-leg assembly is then placed onto the four table tops assembly. This is shown in Fig. 12 as being about 15 inches above the table top assembly.

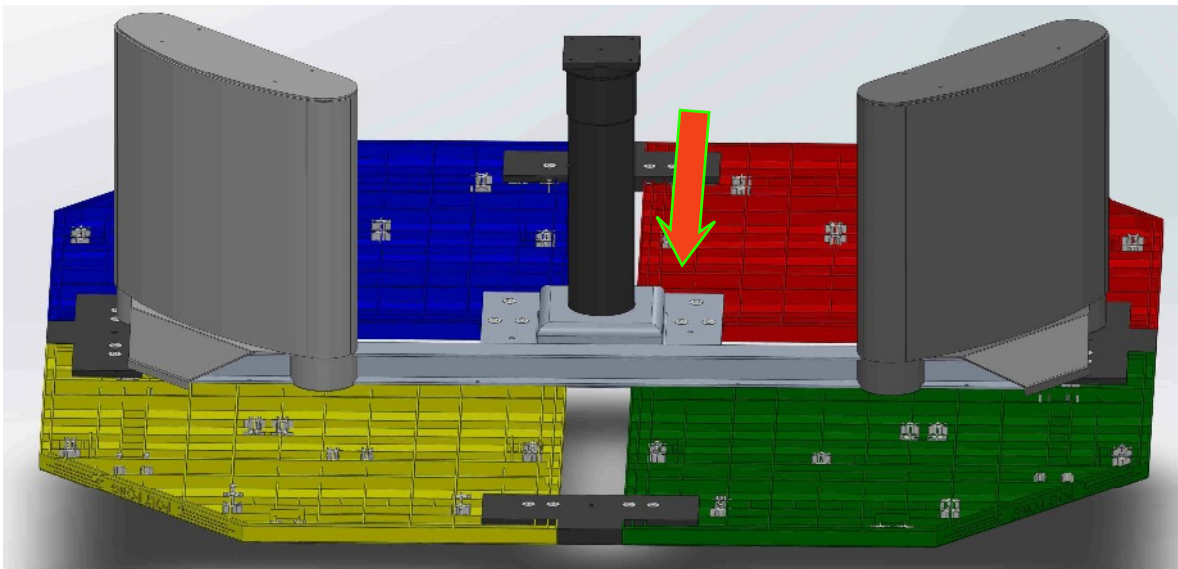
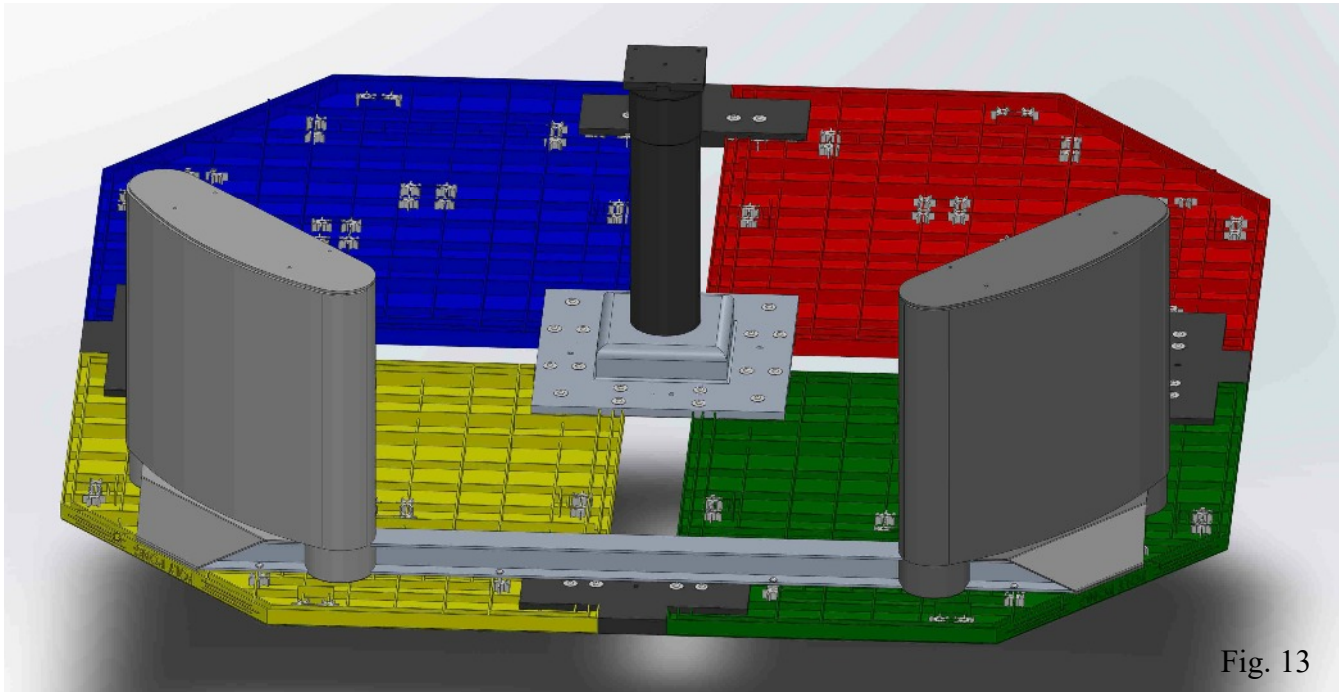
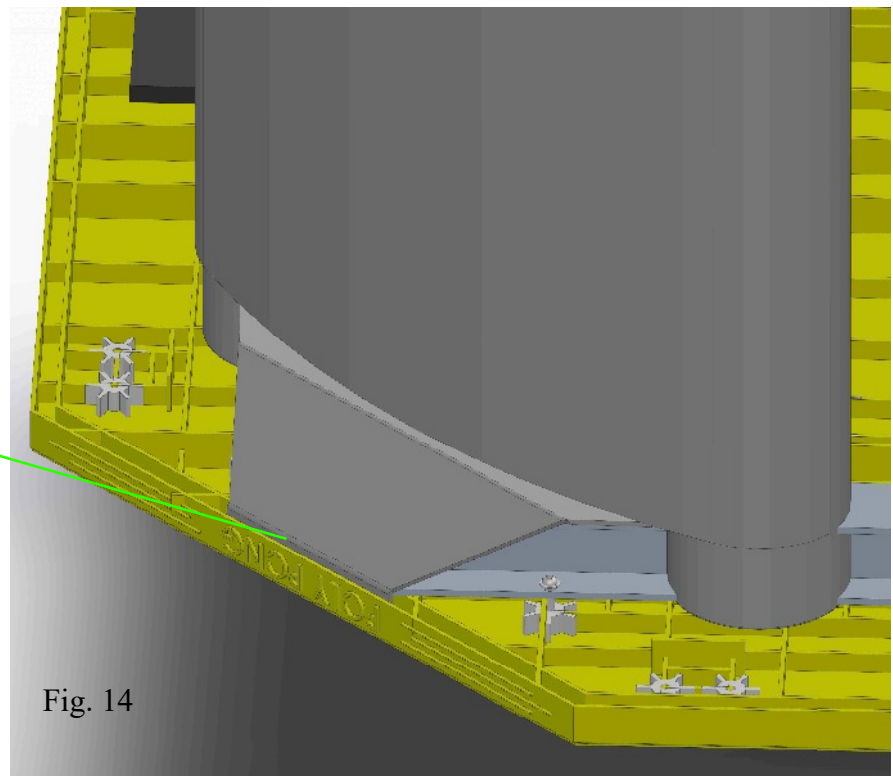


Fig. 12



Lower the beam-leg assembly onto the table tops assembly and position it so that the beam covers on each end fit into the slots just inside the front diagonal lip of the table edge just above the inverted POLY PONG logo and centered on the diagonal table edge. This should be the same for both sides Fig. 13 & 14.



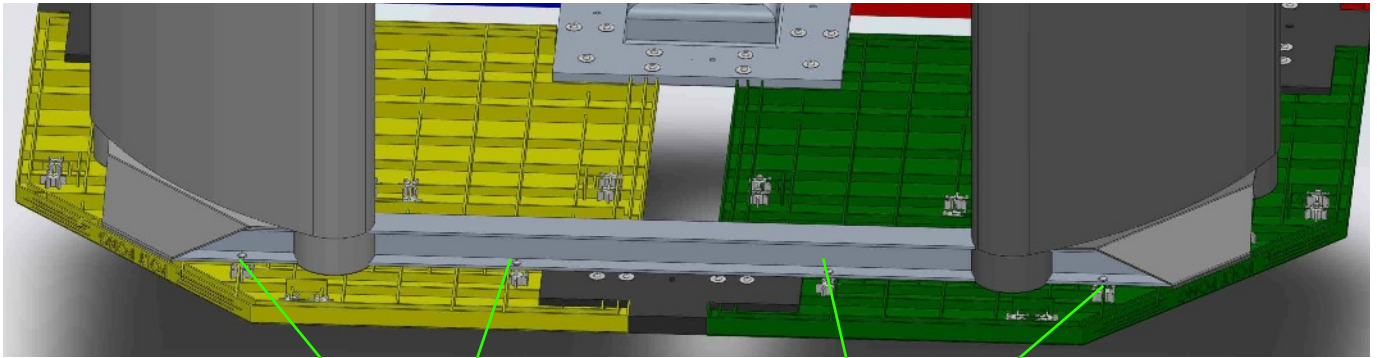


Fig. 14

Look carefully and you will notice four bolt holes on the lower outer lip of the “T” beam. (There are four on the inside as well.) Carefully re-position the beam slightly so that these holes align up with four imbedded nuts in the table tops. Using 8 mm by 20 mm screws and SMALL washers, attach the beam to the table tops. **LEAVE THESE SCREWS LOOSE.** Fig 15.

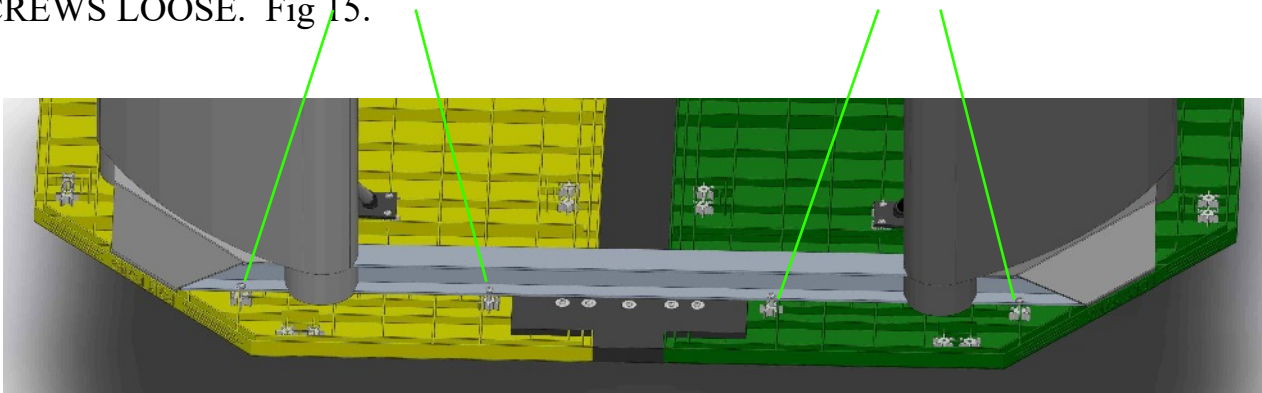


Fig. 15

Now do the same for the four holes on the inside of the beam. Use 8 mm x 20 mm screws and small washers. The beam may need to be re-positioned slightly. Fig. 16. Two of these screw holes are on the far side of the leg assemblies under the beam covers. **LEAVE THESE SCREWS LOOSE.** Fig. 16.

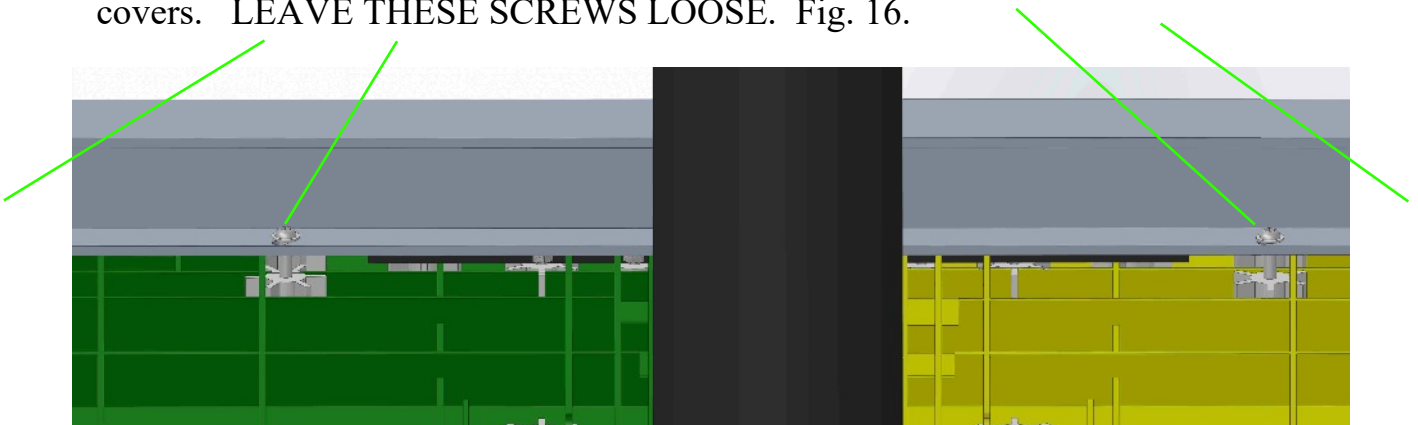


Fig. 16

Insert another “I” beam into the remaining “I” slot in the leg on the green table top. Fig. 17.

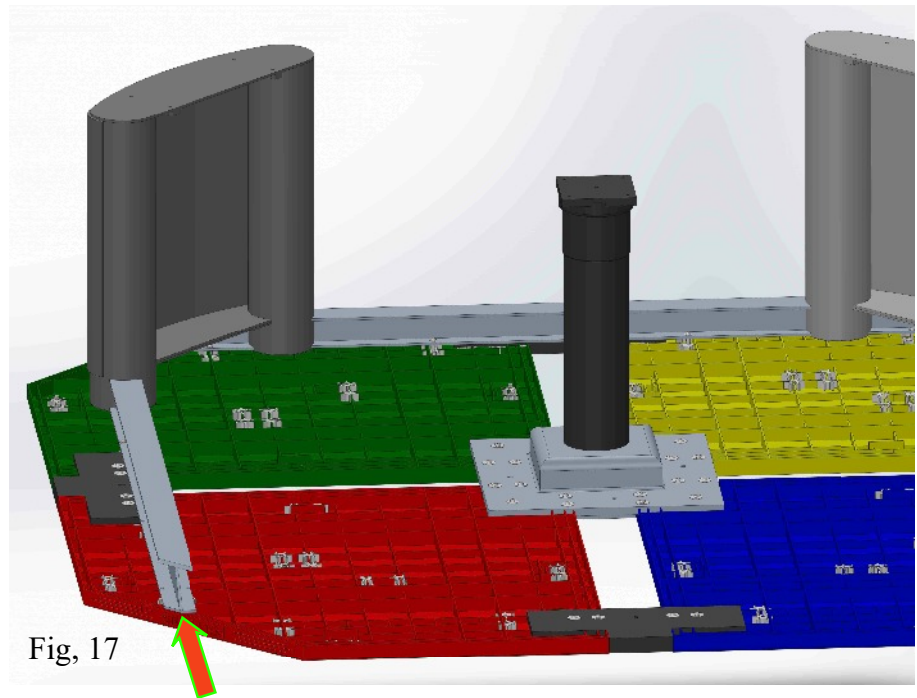


Fig. 17

Position it as you did before. Add another “I” beam. This one goes into the leg on the yellow table top. Fig. 18.

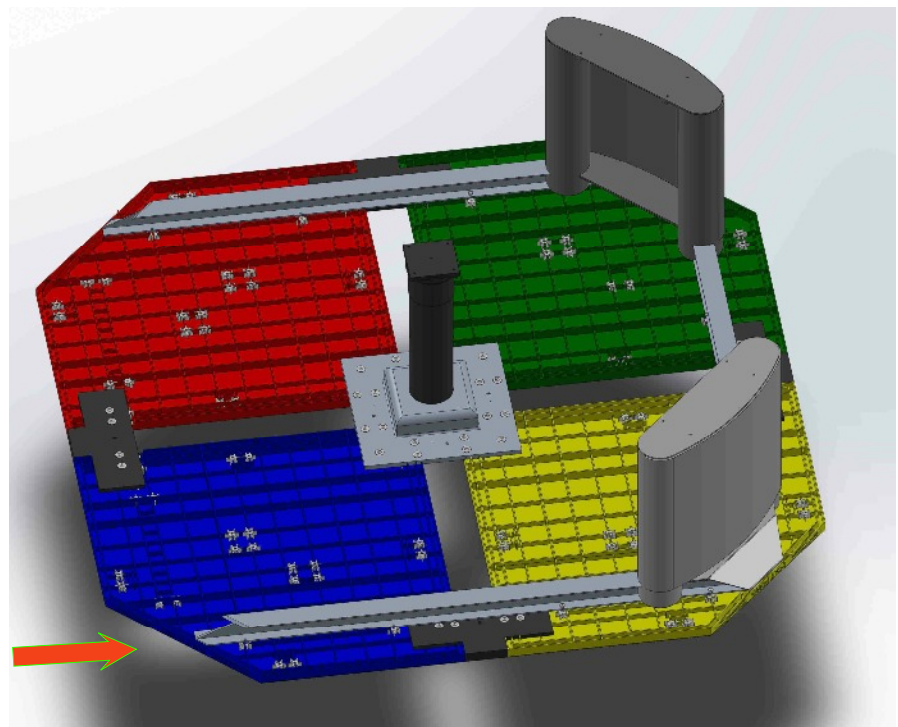


Fig. 18

Assemble another leg-”I” beam assembly with your remaining two legs and the remaining “I” beam as you did in Figures 8 through 11. This one will be positioned to slide onto the two beams extending from the green and yellow table tops. This will require the help of two people. Fig. 19.

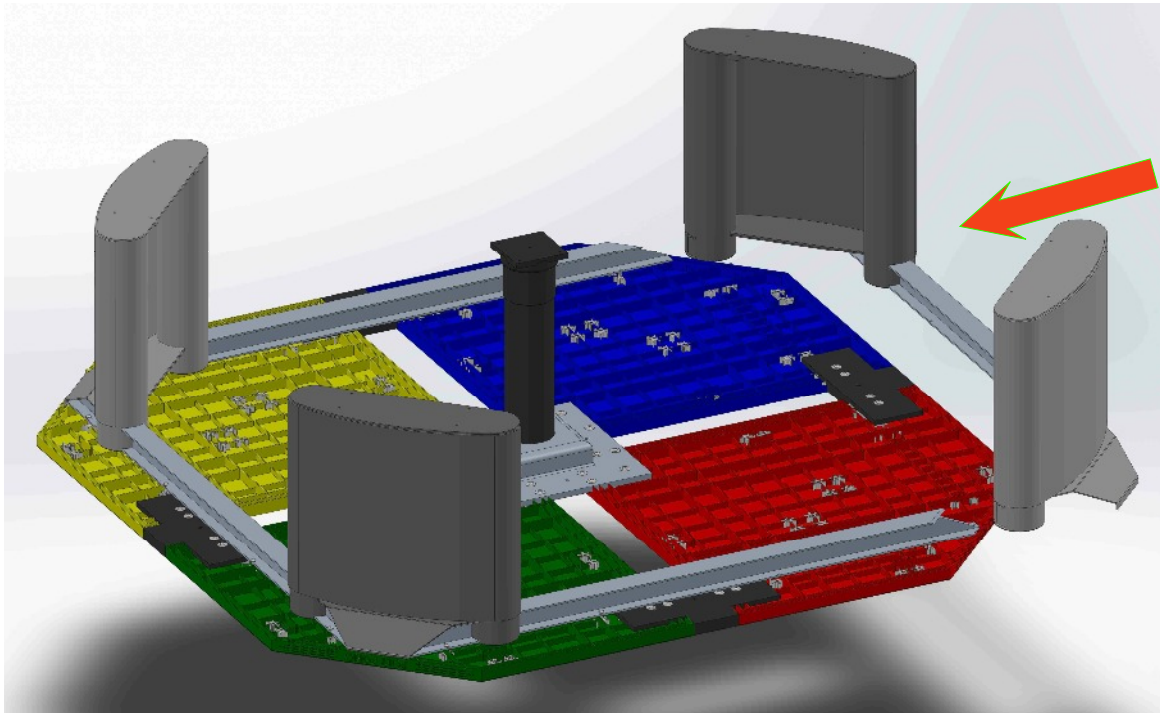


Fig. 19

Carefully re-adjust each beam so that the bolt holes all align. Check each beam cover to insure that they are in the slot just inside the front angle table top. Fig. 14. Now add eight 8 mm x 20 mm screws and small washers for each beam. LEAVE THESE SCREWS LOOSE. Fig. 20.

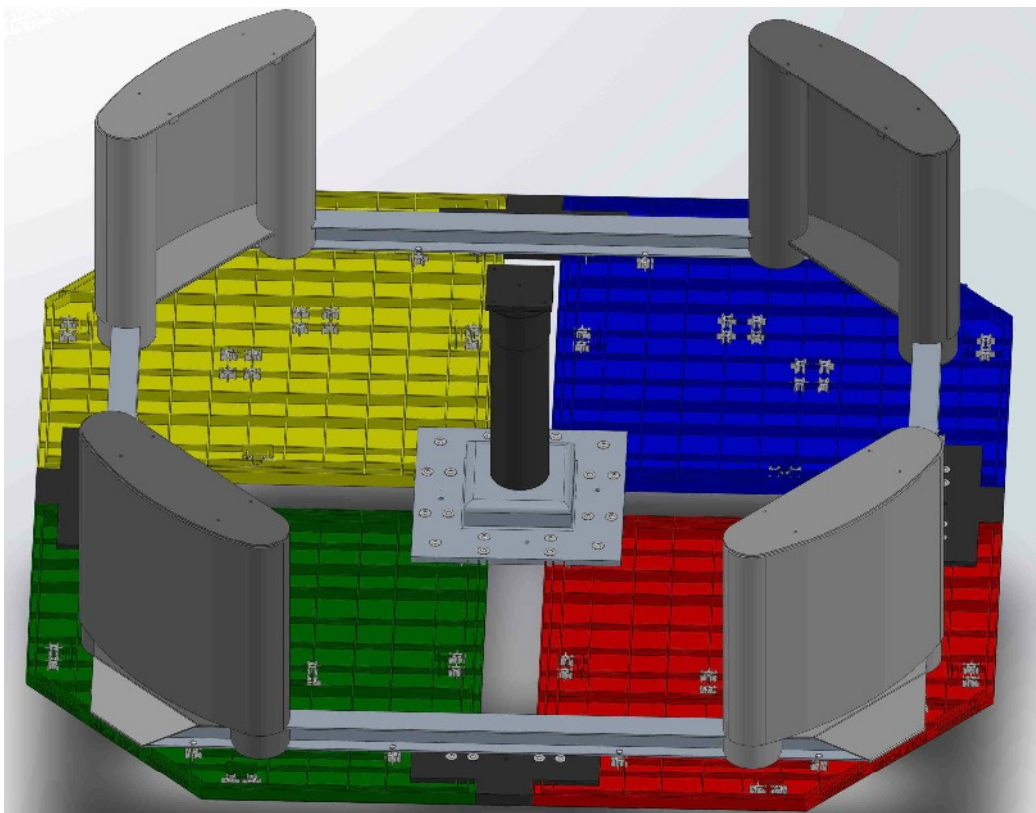


Fig. 20

ADDING THE PIPE BRACES

There are eight pipe braces to be added, two per table top. The pipe braces swivel on their base. Position the pipe brace as shown in Fig. 21. The flange should be aligned parallel with the nut holes as shown but slightly away from the leg pipe. The other end should swivel around to be made to align up with the hole drilled in the leg pipe.

Fig. 21. There are left pipe braces and right pipe braces, Select the one that fit squarely into the leg.

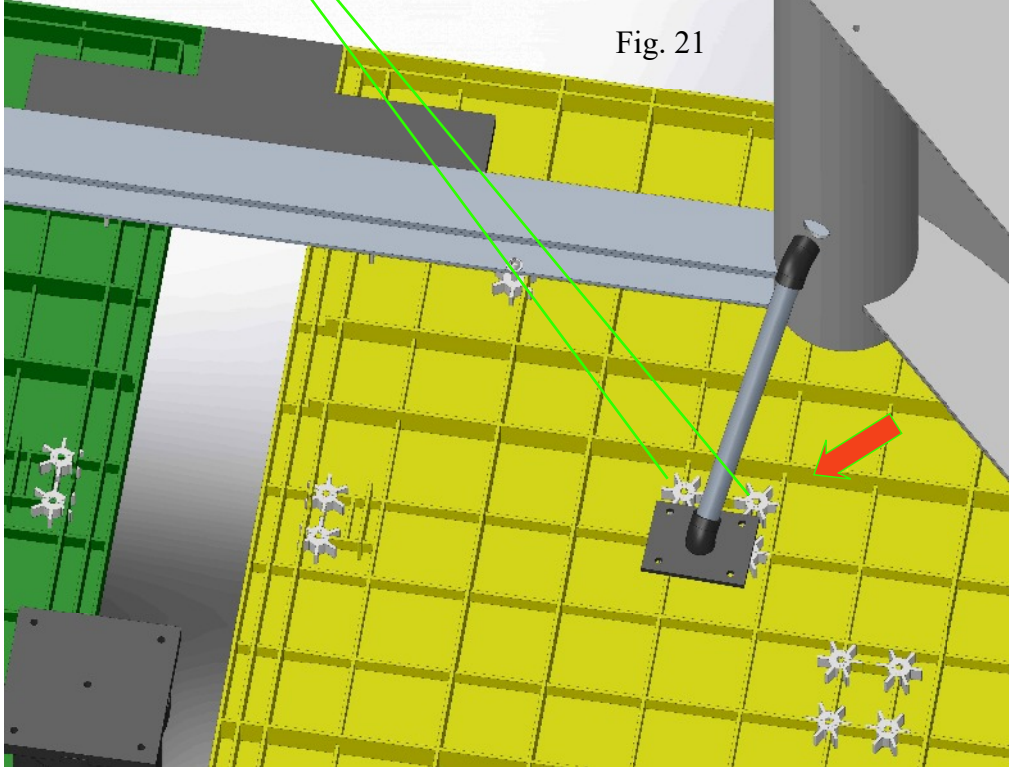


Fig. 21

It should make a press fit into the hole when the flange at the bottom is moved to align with the four nuts in the table top. When you are sure that everything fits, pull the pipe brace back out from the leg pipe, apply some PVC cement to the end of the brace and some to the edge of the hole. Quickly re-insert the brace end into the hole and bolt the bottom flange in place using four 8 mm x 20 mm screws and small washers. The cement sets quickly. You only have about 10-15 seconds to get it in place. Fig. 22. If it is difficult to get it to fit, have a helper pull out on the leg foot to extend it slightly. It should then fit snugly when your helper relaxes his pull. See the arrow.

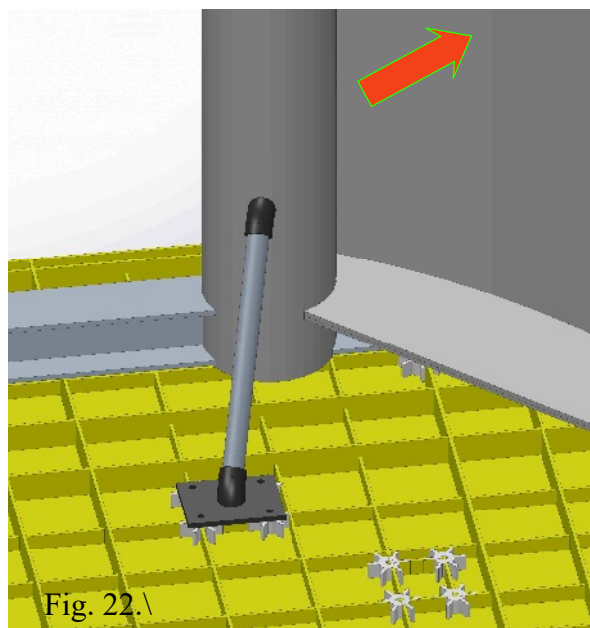
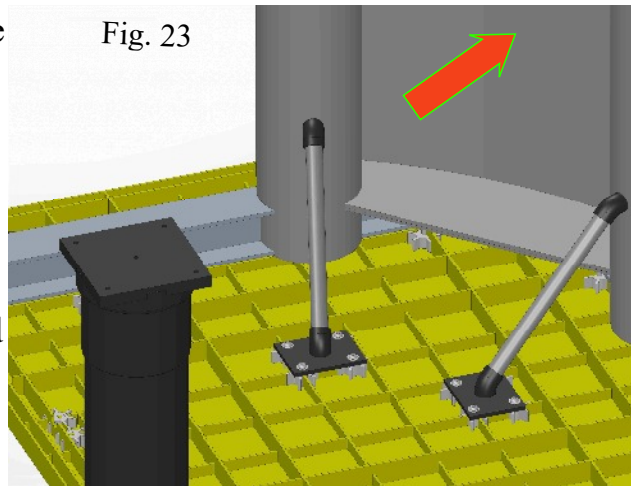
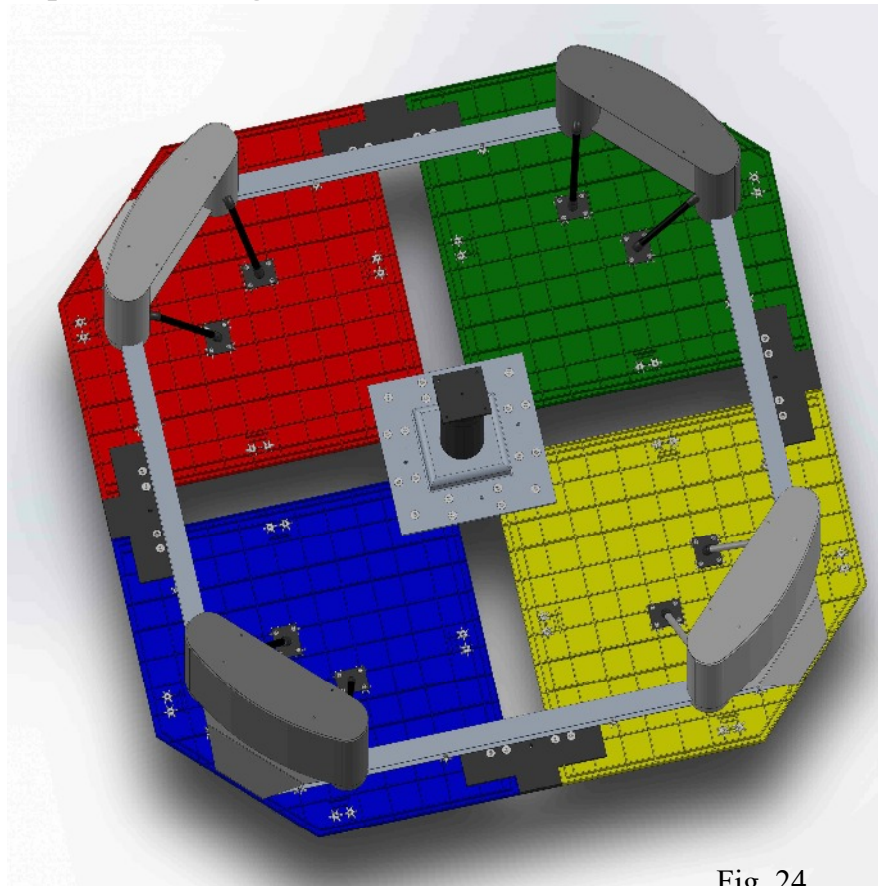


Fig. 22.

Repeat for the second pipe brace on the yellow table top. If it is difficult to get the pipe end into the hole, have the helper pull out on the table leg making it bow out slightly. Then you can get the end to go into the hole as desired. Fig, 23. Note the arrow. Remove it, add some PVC cement to the brace end and the hole edge as you did before.



When you have successfully mounted two pipe braces, proceed to the other three leg assemblies. When completed, your table should resemble Fig. 24. Now Make sure that everything is in place, **then tighten all of the screws.**



THIS COMPLETES THE ASSEMBLY OF THE TABLE BOTTOM SIDE.

Let the glue dry at least one hour.

This step is the hard part. Use at least four helpers. You must lift up the table and carefully turn it right-side-up without putting pressure on the legs against the floor. You want to flip it over in the air and then allow the feet to touch the floor. Once this is done, you can then carry it into the desired location and position.

Fig. 25.

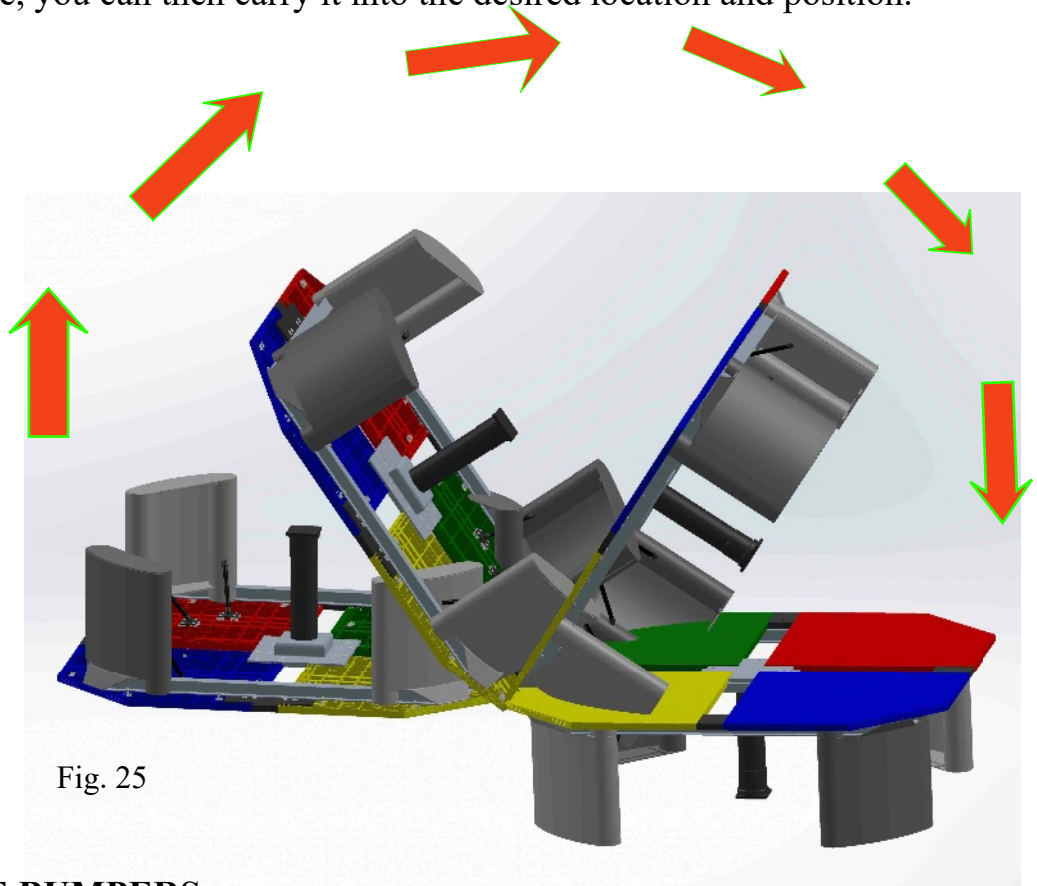


Fig. 25

ATTACHING THE BUMPERS

Notice the two threaded inserts on the bottom side of the bumper.

Fig. 26. Insert a 60 mm screw into each thread insert and bend the nut placement if necessary to make them perpendicular then remove the screw. These are made to align up with the two holes, one in the table joiner and the other in the center post top. Fig. 27.



Fig. 26

Take the bumper and place it into the slot for the bottom protrusion with the pointed end towards the table center. It should settle into the gap between the two table tops. Fig. 28 & 29.

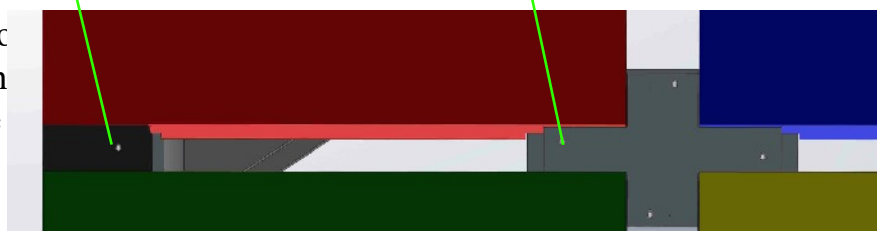


Fig. 27

From the underside of the table, look through the two holes, one in the center post and the other in the table joiner. Carefully slide the bumper until you can see the nut inserts. Fig. 30 shown in transparent mode.

Using an 8 mm x 60 mm screw with a LARGE washer, put a screw up into the hole in the center post, then on into the bumper insert. Repeat with a similar screw through the table joiner into the bumper insert. Fig. 31 & 32. Do not cinch them up yet.

Repeat for the other three bumpers.

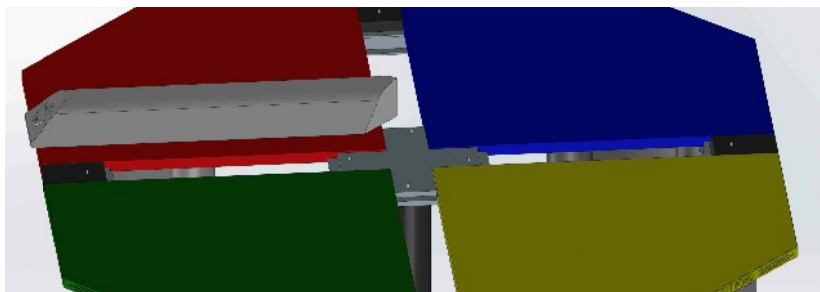


Fig. 28

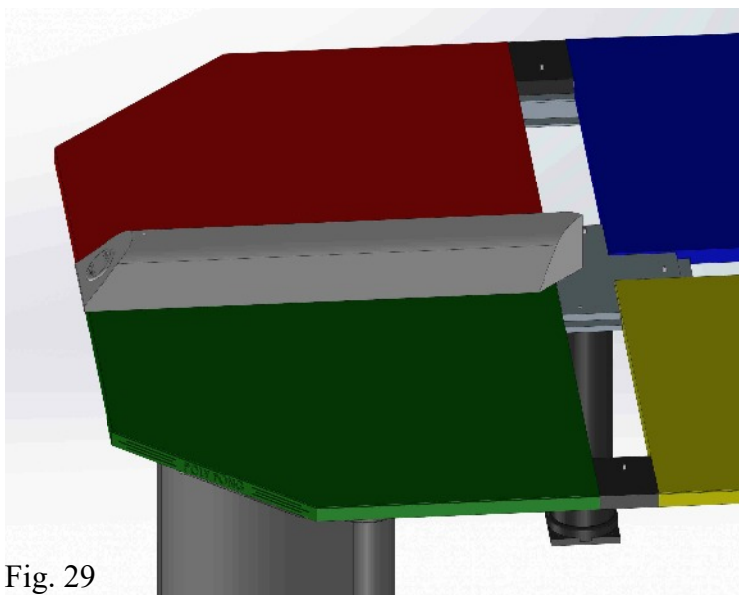


Fig. 29

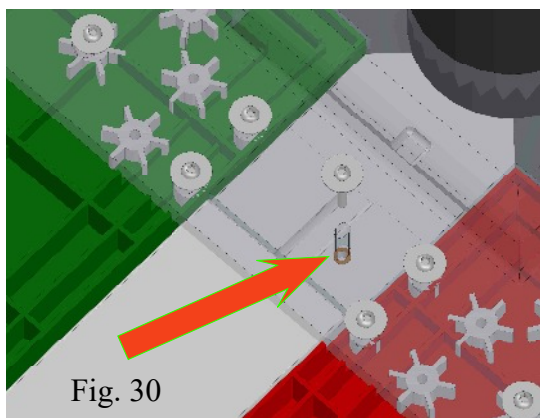


Fig. 30

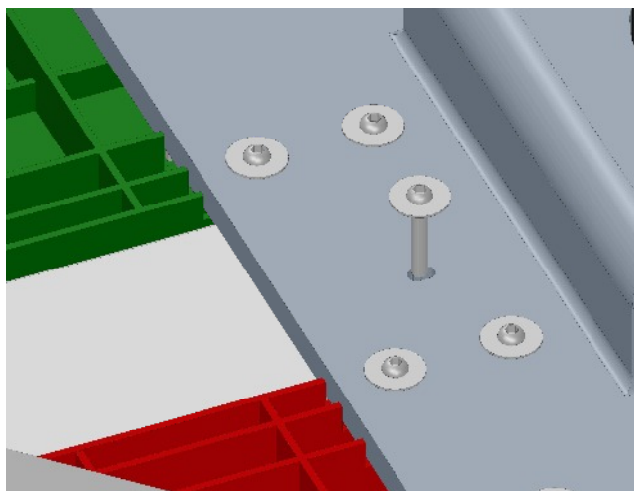


Fig. 31

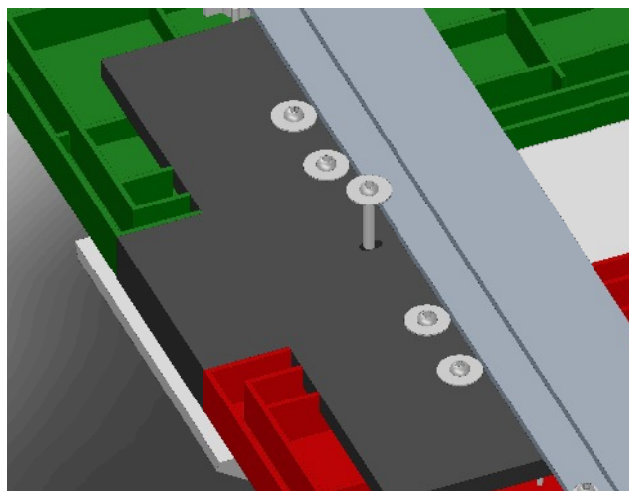


Fig. 32

Looking from the top, gently slide each bumper so that all the points meet in the center and the angled edges meet smoothly. Fig. 33.

Once this is done, return to the underside and cinch up all eight of the 8 mm x 60 mm screws.

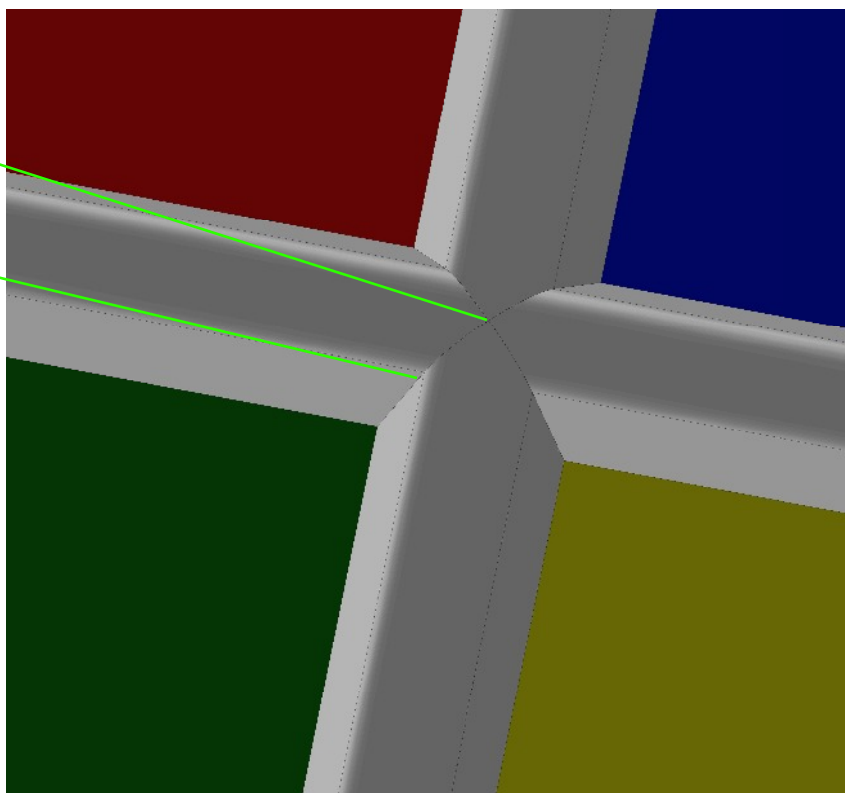


Fig. 33

All that remains is to secure your table to the floor. This is done by putting one or two fasteners through each corner leg. Use large washers with your bolts. Anchor the center post as well. Only the large washers are supplied. Choose mounting hardware that conforms to your surface.

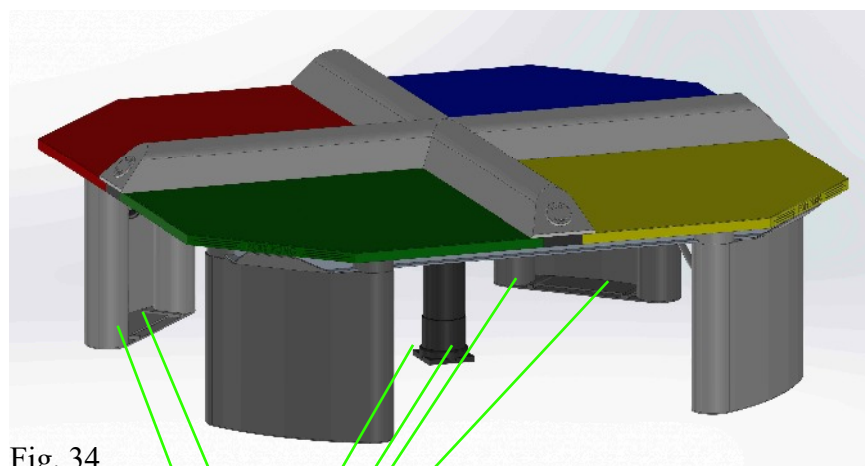


Fig. 34

Mounting hardware

YOUR TABLE IS NOW COMPLETE!

You will find four colorful paddles and some balls to test out your installation.

TABLE MAINTENANCE

Hand smudges, paddle scars, etc. can be wiped off using a mild soap, warm water and a soft rag. The plastic surfaces on the legs and bumpers can be similarly cleaned. In time, the bumpers will get hard and crack due to the ultra-violet sun rays. They can be periodically replaced by placing an order to Poly Pong, Inc. This is true for any part of your table.

The table colors are also susceptible to the ultra-violet rays. The paint contains UV inhibitors but it eventually will fade. Yellow is the most susceptible to attack. Any of the colors can be recoated. Use Valspar LIC43 low gloss Polyurethane Enamel of the desired color. Mix with LK40 polyurethane LIC activator, four parts LIC to one part LK40. One quart will easily coat a table top. The yellow top is John Deere yellow.

Black surfaces are coated with Sherman Williams paint Hi-Solids Polyurathane B65 TWJ 304 with B60V20 activator.

The process is:

1. Remove the bumpers by removing the two screws that hold each to the table..
2. Clean the surface thoroughly with a mild soap. Rinse thoroughly.
3. When dry, sand lightly with 320 grit sand paper.
4. Mask off the table joiners and any other nearby surfaces
5. Apply by roller or spray a good quality acrylic paint, one that has a good UV inhibitor rating and requires a hardener to be stirred into the mix.
6. When it is thoroughly dry, remove the masking tape and replace the bumpers.

POLY PONG, INC
412 South 100 East
Salem, Utah 84653
www.polypong.com
1-801-473-1321